

New Product Release

Manual sample presses for encapsulation

Elemental Microanalysis have introduced new manual sample presses, enabling perfect sample encapsulation every time.

Available in 3 different diameters, our compact, high quality manual press will produce uniform compressed sample pellets with ease.

The manual presses can be used with flat foils, cone foils, boats or capsules.

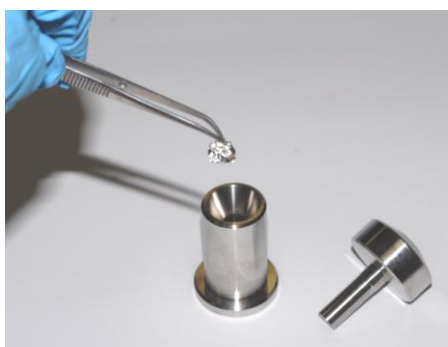
The press is in three stainless steel pieces. The base pedestal has a concave post which forms the bottom of the pellet, and the middle cylinder forms the sides of the pellet. The plunger fits into the cylinder, and has a concave end to form the top surface of the pellet.

The cylinder also has a funnel shape on top to form a cone first, if using flat foils.



EMAL Part no	Description	Elementar® part no
E2535	Manual press 7mm pellet diameter	41.01-003/4
E2536	Manual press 9mm pellet diameter	41.01-0004
E2537	Manual press 10.5mm pellet diameter	41.01-0002/4

Operating the press

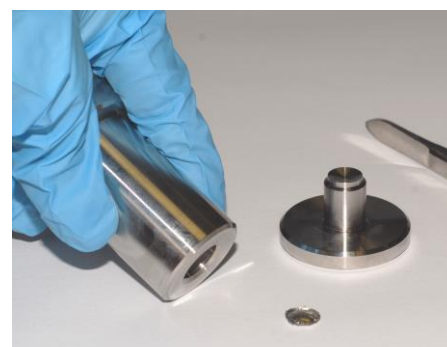


Place the middle cylinder section on the bottom section. Weigh the sample into the foil and just lightly close it with either forceps or gloved hands.

Place the sample into the top of the vertical cylinder.



After inserting the sample, insert the plunger and press down on it with the hand to compress the sample, driving out any ambient air (i.e. nitrogen) and forming the pellet.



To remove the pellet, lift the middle cylinder with fingers from the bottom section, whilst keeping the heel of the hand on the plunger. Press with the heel of the hand to push the compressed sample pellet out of the middle cylinder. Typically the pellet is then weighed again.

All trademarks acknowledged. Use of the Elementar® part number is for reference only and does not imply that the products are of Elementar® origin.

All Elemental Products are guaranteed to be of high quality and suitable for use in the stated application.